



Villa A5

SUPERFICIE TOTALE: 245,73 m²

PIANO INTERRATO

1 Garage 77,94 m²

PIANO TERRA

2 Antibagno 3,26 m²

3 Bagno 3,21 m²

4 Soggiorno-Cucina 55,74 m²

5 Loggia 7,60 m²

6 Giardino 27,50 m²

PIANO PRIMO

7 Disimpegno 8,68 m²

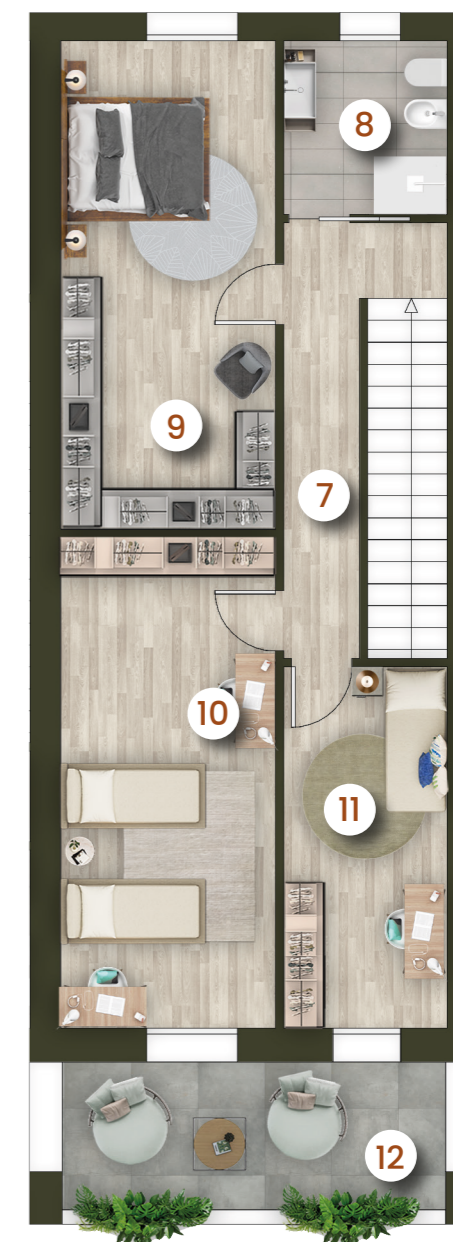
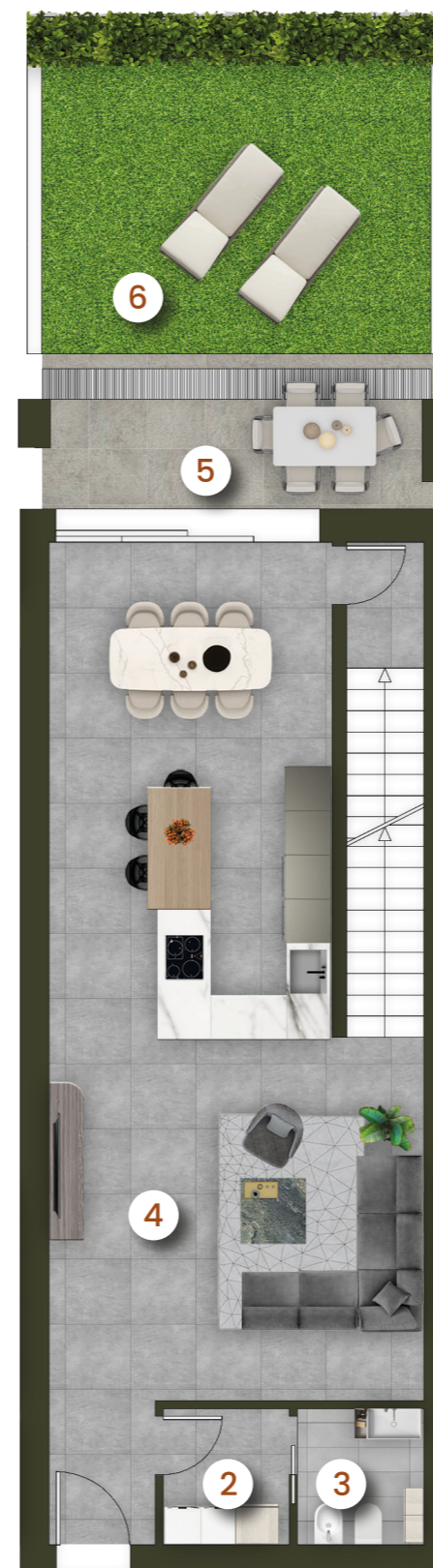
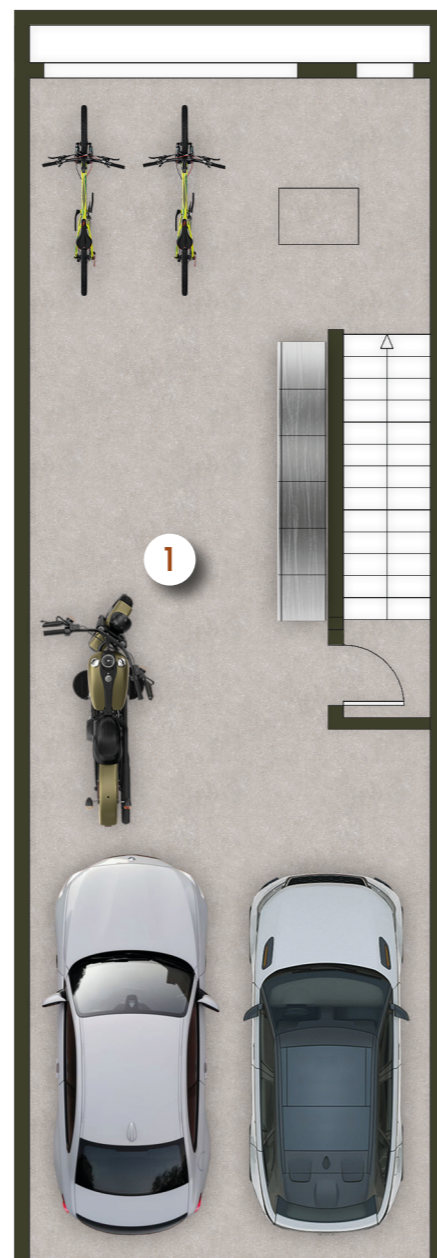
8 Bagno 4,94 m²

9 Camera 18,02 m²

10 Camera 18,40 m²

11 Camera 10,30 m²

12 Terrazza 10,14 m²



scala 1:100

