



## Villa B5

**SUPERFICIE TOTALE: 259,04 m<sup>2</sup>**

### PIANO INTERRATO

1 Garage 77,86 m<sup>2</sup>

### PIANO TERRA

2 Soggiorno-Cucina 49,33 m<sup>2</sup>

3 Antibagno 3,26 m<sup>2</sup>

4 Bagno 3,21 m<sup>2</sup>

5 Portico 11,25 m<sup>2</sup>

6 Giardino 44,00 m<sup>2</sup>

### PIANO PRIMO

7 Disimpegno 8,68 m<sup>2</sup>

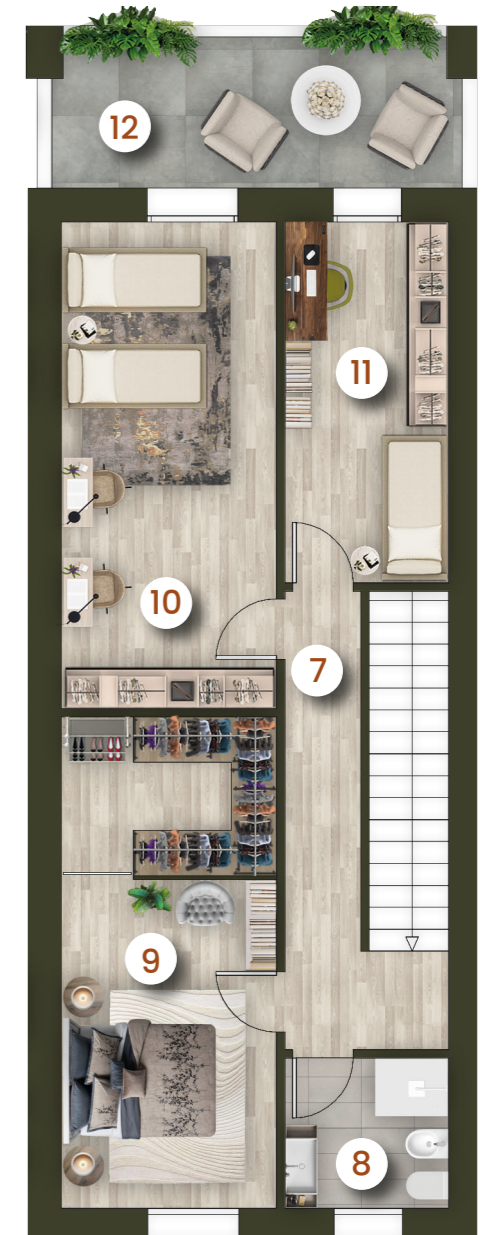
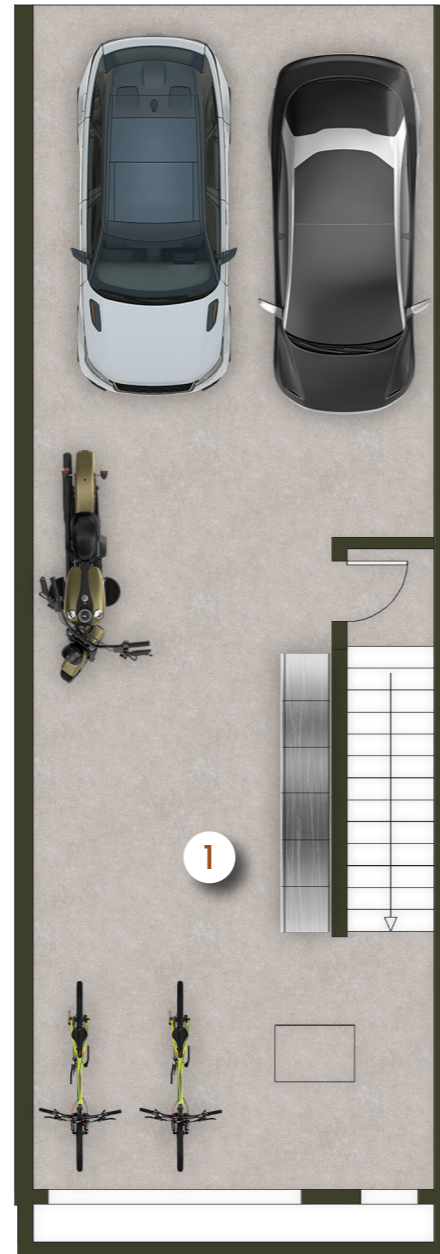
8 Bagno 4,29 m<sup>2</sup>

9 Camera 18,46 m<sup>2</sup>

10 Camera 18,26 m<sup>2</sup>

11 Camera 10,30 m<sup>2</sup>

12 Terrazza 10,14 m<sup>2</sup>



scala 1:100

