



Villa B3

SUPERFICIE TOTALE: 394,82 m²

PIANO INTERRATO

1 Garage 77,86 m²

PIANO TERRA

2 Soggiorno-Cucina 47,07 m²

3 Ripostiglio 2,04 m²

4 Antibagno 1,70 m²

5 Bagno 4,55 m²

6 Portico 13,44 m²

7 Giardino 180,00 m²

PIANO PRIMO

8 Disimpegno 8,80 m²

9 Ripostiglio 1,05 m²

10 Bagno 5,07 m²

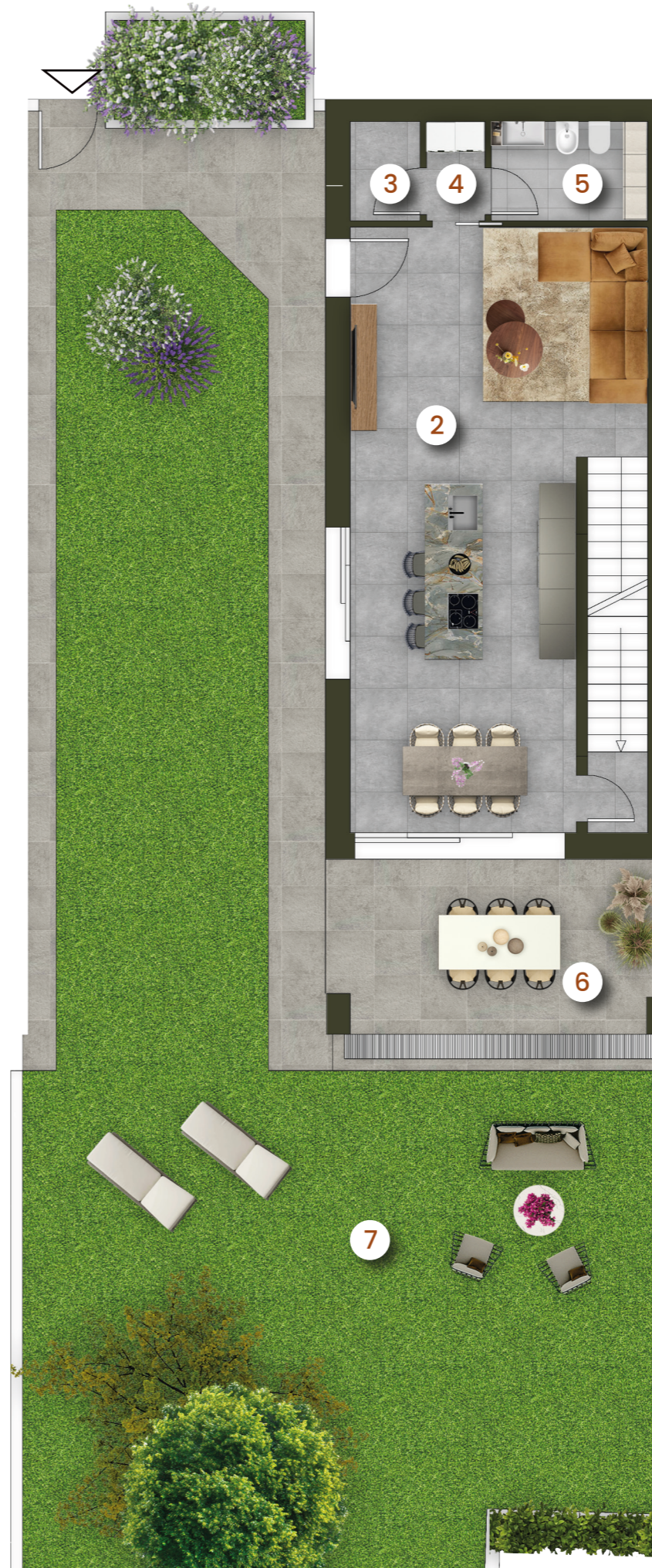
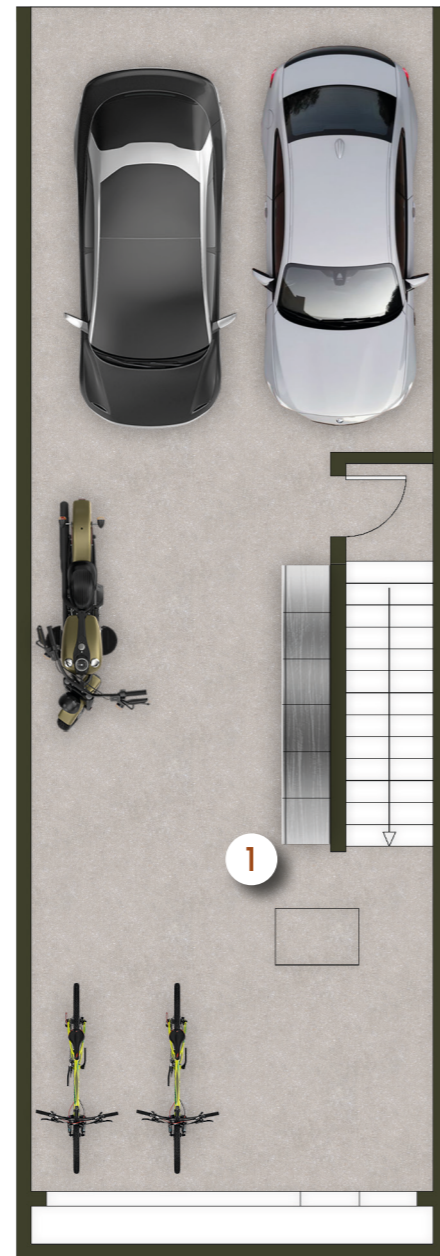
11 Bagno 5,38 m²

12 Camera 15,12 m²

13 Camera 11,30 m²

14 Camera 11,30 m²

15 Terrazza 10,14 m²



scala 1:100

